

DVR-2 * ATMOSPHERE = BAROMETRIC PRESSURE X 25.4

Readjustment

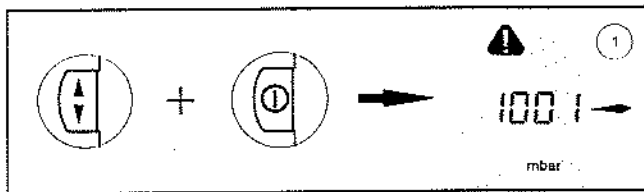
The equipment has been adjusted in the factory. In general, there is no need for adjustment by the user because of the excellent long-time stability.

Depending on operation conditions, type of application and accuracy requirements, an inspection and readjustment may become necessary.

Adjustment at atmospheric pressure:

Admit air to the vacuum gauge. Make sure that the vacuum connection at the vacuum gauge is at atmospheric pressure.

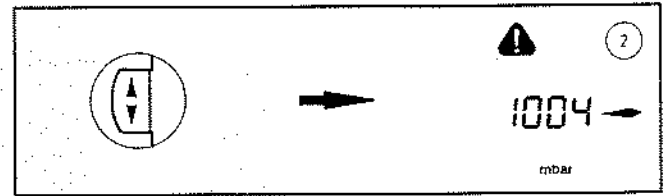
Note: Determine exact actual atmospheric pressure, e. g. by using an accurate barometer or get accurate reading from the weather service, e. g. at the next airport, etc. (take into account the difference in altitude between e. g. airport and laboratory).



Press key **[UP/DOWN]** simultaneously with key **[ON/OFF]**.

- ☑ The vacuum gauge switches to the adjustment mode (indicated by a warning triangle).
- ☑ The arrow in right direction indicates that the pressure value can be increased by using key **[UP/DOWN]**.

- ☑ Press key **[UP/DOWN]** to increase the reading to actual atmospheric pressure.

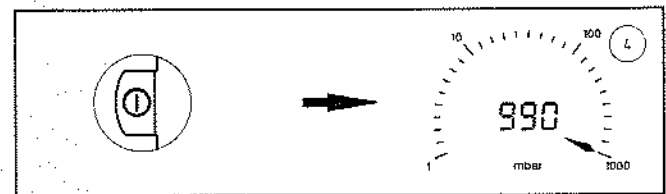


To reduce the reading:

- ☑ Press key **[MODE]** to change arrow direction to the left.



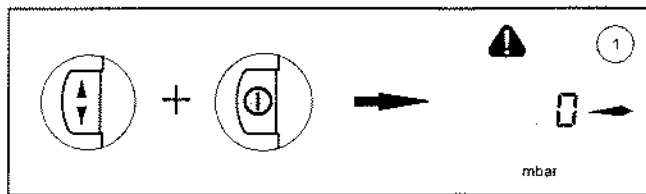
- ☑ Then press key **[UP/DOWN]** to reduce the reading.



- ☑ Press key **[ON/OFF]** to confirm adjustment and to terminate mode.

Adjustment under vacuum:

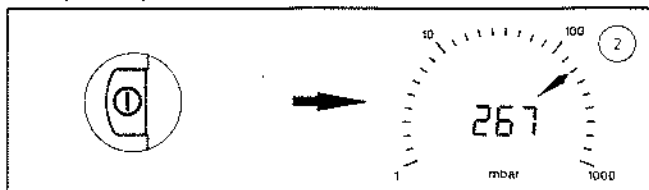
Evacuate the vacuum gauge to a pressure < 0.5 mbar (< 0.4 Torr) (e. g. by applying a good rotary vane pump).



Press key **[UP/DOWN]** simultaneously with key **[ON/OFF]**. The vacuum gauge then switches to the adjustment mode (indicated by a warning triangle).

- ☑ The reading is adjusted automatically to "zero".

Note: Adjustment under vacuum with an actual pressure higher than 0.5 mbar (0.4 Torr) reduces the accuracy of measurement. If the pressure is significantly higher than 0.5 mbar (0.4 Torr), adjustment to a reference pressure is recommended.



- ☑ Press key **[ON/OFF]** to confirm adjustment and to terminate mode.

Adjustment at reference vacuum:

- ☑ Evacuate the vacuum gauge to an exactly known reference pressure within the range of 0...20 mbar (0...15 Torr).
- ☑ Switch vacuum gauge to adjustment mode (see "Adjustment under vacuum").
- ☑ Press key **[UP/DOWN]** to adjust the display from "0" ("zero") to the actual reference pressure in the vacuum line in the range of 0 to 20 mbar (0 to 15 Torr).



- ☑ Press key **[ON/OFF]** to confirm adjustment and to terminate mode.

Note: The accuracy of the value of the reference pressure will directly affect the accuracy of the adjustment. If the nominal ultimate vacuum of a diaphragm pump is used as "reference" vacuum, the accuracy of adjustment of the vacuum gauge might be doubtful. The diaphragm pump may not achieve the specified value (due to condensate, poor state, failure of the valves or the diaphragm).